

St. Charles Parish Sheriff's Office



Update

Volume #11

2008 Annual Report

www.stcharlessheriff.org

DEDICATED TO REPORTING THE NEWEST DEVELOPMENTS IN THE ST. CHARLES PARISH SHERIFF'S OFFICE

Postal Patron

This is a free annual publication mailed to St. Charles Parish residents, law enforcement professionals, community organization representatives, civic leaders and government officials. If you are not on the mailing list and would like to receive future issues, please direct your request to the Special Services Dept. at (985) 783-1355 or fax us at (985) 783-1195.

RISING TO THE CHALLENGE



**SHERIFF
GREG CHAMPAGNE**

Welcome to the St. Charles Parish Sheriff's Office's eleventh issue of Update. In it we strive to keep local residents aware of the many advancements within the agency.

At the same time, we want to bridge the distance between the community and law enforcement providers, facilitating the exchange of information and giving a voice to all involved in the community policing process.

This issue explores recent advances we've made — from the latest policing strategies to vital public initiatives — all of which are aimed at keeping St. Charles Parish residents safe and maintaining our unique quality of life.

1.

It seems two guys have recently delayed the *UPDATE* and caused quite a bit of anxiety for all of us in St. Charles Parish. No, they are not criminals, but two Hurricanes named Gustav and Ike.

While crime statistics for the first half of 2008 remained consistent with the ten year low of 2007, it was weather that impacted us all most thus far this year.

Hurricane Gustav made its turn northward off the west coast of Cuba as a Category 5 Hurricane causing a great deal of concern for all of us. Fortunately, it made landfall as a Category 2 storm to the west of us and spared us from the extensive damage and flooding that was predicted. We estimate that nearly 85% of our residents heeded the mandatory evacuation request and left for higher ground and safety. Deputies of the St. Charles Parish Sheriff's Office remained on duty under difficult conditions away from their families and stood tall. First they worked in the hot sun to make sure that traffic flowed out of and through St. Charles Parish. Then, for the first time we evacuated 550 inmates from the Nelson Coleman Correctional Center in Killona due to the possibility of flooding there. Corrections deputies handled this effort throughout the night and without a hitch. Corrections officers then joined other divisions in working traffic checkpoints and patrolling the streets of St. Charles Parish. All deputies then worked together to

facilitate your re-entry back home. I have never been more proud of the members of the St. Charles Parish Sheriff's Office.

Unfortunately, there are those few that seek to violate our property during an emergency situation and some instances of burglary and theft occurred mostly during the height of the storm's winds and



rain. However, I am pleased to report that less than one in one thousand

homes were victimized. This amounted to over 99.9 % of the property in heavily evacuated parish remaining free from any criminal activity. Even this one tenth of 1% is unacceptable to me. Investigators have made arrests of some of those despicable individuals for looting and continue to follow leads of other incidents. We will not rest until everything possible is done to bring all of

these hoodlums to justice.

Just when we were getting back to normal, Ike roared into Galveston ravaging our coastline once again. While thousands of homes and buildings were flooded in Louisiana alone, St. Charles Parish was spared the brunt of this storm also. Parish officials worked hard for several days and we dodged another bullet from flooding though there were some tense hours for some in certain areas. Deputies were there to protect and serve again. We also were blessed by support from several

deputies from Jefferson County Kentucky as well as members of the Vermont National Guard. Special thanks to the Norco Civic Association for housing and caring for our Kentucky brothers and sisters displaying community spirit that is unique in St. Charles Parish.

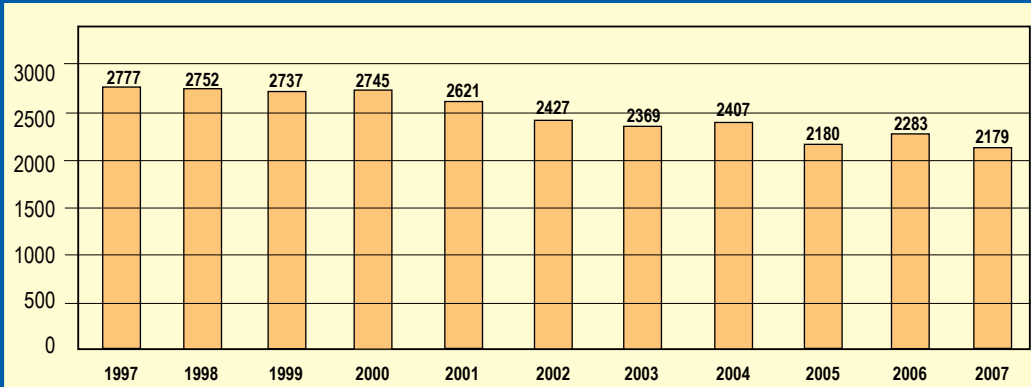
This year's edition of *UPDATE* is designed to provide specific information of the various divisions of the St. Charles Parish Sheriff's Office.

We are all ready for a well-deserved rest now, but we will continue to diligently protect and serve.

Greg Champagne

ST. CHARLES PARISH ANNUAL UCR TOTALS

Total Index crimes reported to the FBI



INSIDE

Chief's Message	page 2
Patrol Operations Dept.	page 2
911 Communications Center	page 3
Criminal Investigations Bureau	page 4
Nelson Coleman Correctional Center .	page 5
Special Services Dept.	page 6
Training Dept.	page 7
Administrative Services Dept.	page 7
Civil Dept.	page 8
Planning and Research Dept.	page 8

A few words from the Chief ...

In past editions of the "Update" we focused on crime stats, outreach programs and community awareness. In this issue we would like to introduce the various divisions within your Sheriff's Office. Each commander is featured with descriptions of the services they provide. The men and women of the SCSO are your friends and neighbors who work hard to provide those services necessary to make our community safe and enhance the quality of life that we all enjoy here in St. Charles Parish.



JOSEPH CARDELLA
Chief Deputy



FRED OUBRE
Captain, Patrol Division

The Patrol Division of the St. Charles Parish Sheriff's Office is comprised of 87 full time, 24 reserve, and 5 part-time officers assigned to six different units, all under the command of Captain Fred Oubre.

These 108 highly trained and professional men and women are tasked with providing around the clock first responder police services to the parish's 60,000 residents.

DEPARTMENT'S FUNCTION

Performs the primary police function of the Sheriff's Office by providing crime prevention, deterrence, investigation, and daily service to the community.

The tasks performed by this division is massive in its scope providing 24 hour patrols primarily in vehicles, but also on foot, on bicycles, boats, motorcycles or ATVs as deemed necessary.

Patrol division officers are responsible for maintaining order throughout the parish and resolving police related conflicts.

CANINE DIVISION

Statistics

Statistical data is from 1-1-2008 to 2-11-2008

Calls for Service

Alarms	13
Burglary Calls	15
Warrants	2
Drug Searches	54
Misc.	3

Training approximately 70 hours for the reporting canines.



Lt. Ricky Oubre and "Paco"

MARINE

Division's Function

- Boating Safety
- Public Assistance
- Camp and Remote Facility Documentation
- Trespassing / ATV Enforcement
- Inter-department division and Outside Agency Assistance.
- Operational Readiness of Equipment



2007 Statistics

- 4 Recovered Drowning Victims
- 2 Boating accident responses
- 25+ Boating Assistance Calls
- 25 Trespassing Citations Issued
- 35 ATV Violation Citations Issued

2008 (January Only)

- 1 Recovered drowning victim
- 1 Boating accident response
- 2 ATV violation citations issued

TRAFFIC

Division's Function:

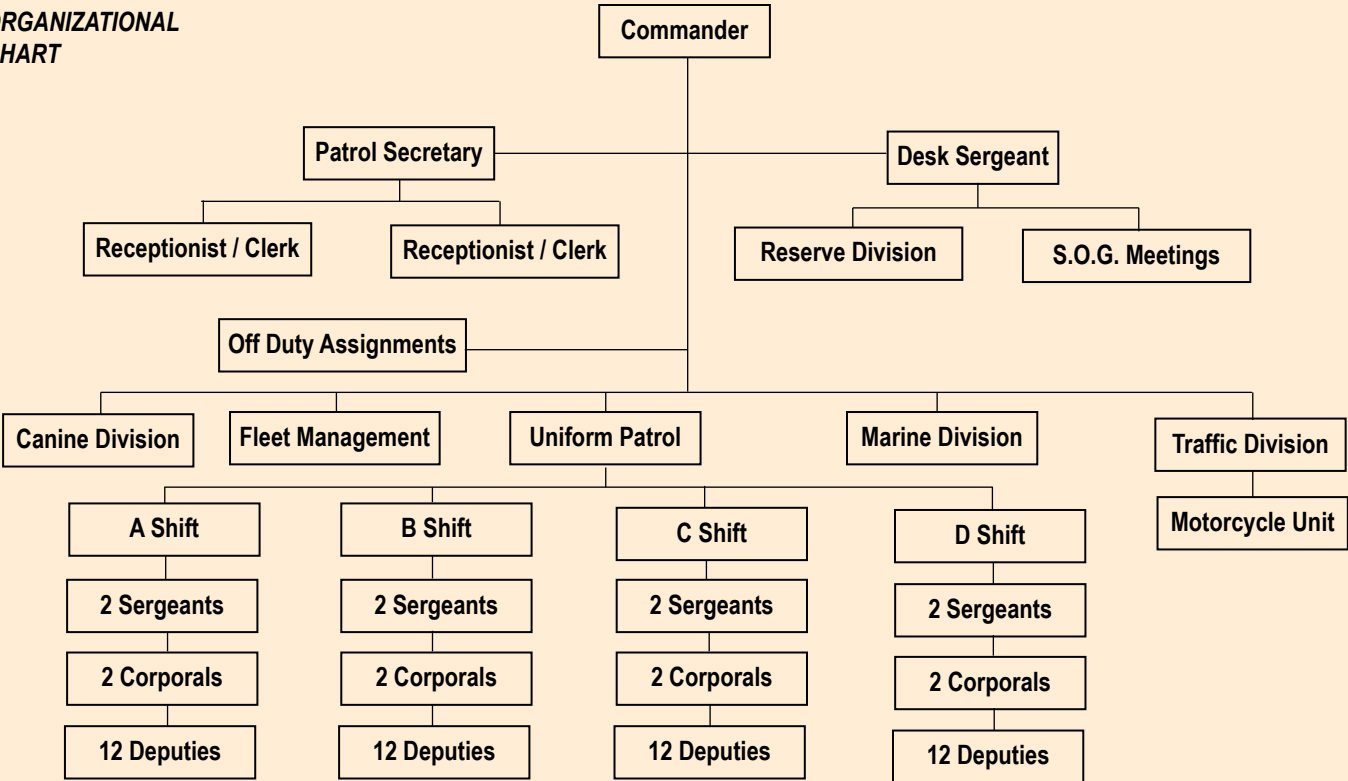
- Work crashes on all State/Parish roads and private property
- Work all fatal crashes on parish roads and State roads if LSP not available
- Hit and Run follow-up investigations
- Insure all crash reports are completed & corrected in a timely manner
- Run radar and handle radar requests
- Handle school zone traffic
- Handle all funeral escorts in the

- parish, and some high profile escorts
- Assist motorists and other vehicular traffic such as wide loads and heavy equipment movements
- Set out radar trailers as requested
- Participate in Traffic Public Awareness Program

Intersection / Crash Frequency

U.S. 61	124
Ormond Blvd.	15
I310	3
La. 626	16
La. 628	12
LA. 48	156
I310	23
La. 626	15
Ormond Blvd.	6
U.S. 90	335
I310	53
La. 52	56
La. 3060	30
I310	120
UIS. 90	35
U.S. 61	5
La. 18	27
La. 48	23
La. 3127	6
La. 18	80
I301	17
La. 52	8

ORGANIZATIONAL CHART



911 COMMUNICATIONS CENTER



**EDDY
BECKENDORF**
Captain

The 911 Communications Center operates 24 hours a day with a staff of 24 administrative and communications specialist personnel responding to non-emergency and emergency calls for services facilitating the receipt and dispatching of emergency response personnel from medical services, nine volunteer fire departments and the Sheriff's office.

St. Charles Sheriff's Office DISPATCH



EMS Dispatch

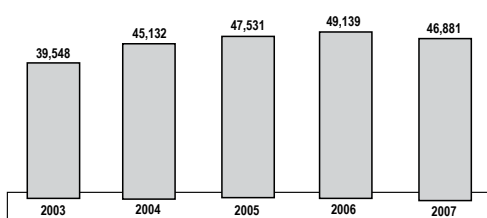


**911 - A VITAL LINK TO MEDICAL, FIRE AND
LAW-ENFORCEMENT EMERGENCY RESPONSE PERSONNEL.**

Fire Department Dispatch



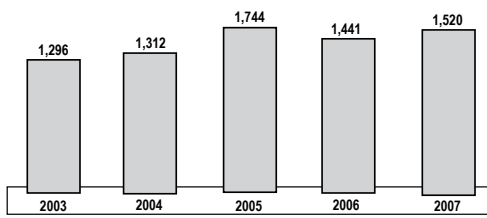
SCSO Calls for Emergency Service Totals for Year



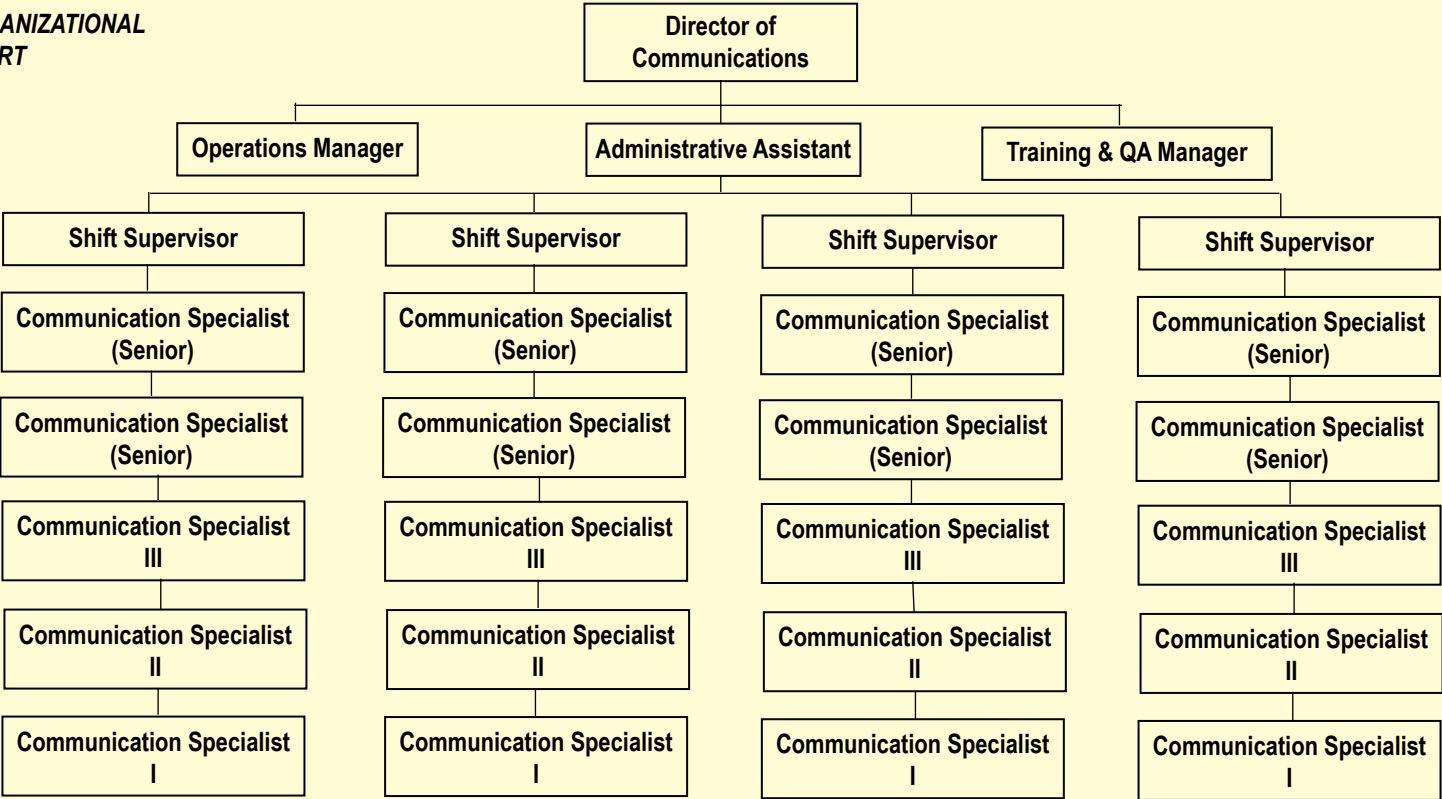
Emergency Medical Calls Totals by Year



Fire Service Emergency Calls Totals for Year



ORGANIZATIONAL CHART



CRIMINAL INVESTIGATIONS BUREAU



SAM ZINNA
Major

CRIMINAL INVESTIGATION DIVISION

Duties & Responsibilities

The major function of the Criminal Investigation Division is to investigate cases that go beyond the capability of Patrol deputies being able to handle cases involving a criminal act or other circumstances.

Criminal Investigators handle all adult and most serious juvenile cases involving criminal acts. When this occurs Criminal and Juvenile detectives investigate the case together.

JUVENILE INVESTIGATION DIVISION

Duties & Responsibilities

Handle all investigations relative to juvenile offenders and adults who commit violent and non-violent crimes against children.

- Juvenile Offender Monitoring Program (JOMP) - Handled 33 cases in 2007
- Juvenile Probation Program - Handled 192 juveniles in 2007
- Children's Advocacy Center (CAC) - Forensic interviews of children
- Tracking of Sex offenders
- Bicycles

CRIME SCENE INVESTIGATION DIVISION

Duties and Responsibilities

- Process crime scenes, collects and secures evidence
- License and permit applications
- Job fingerprinting and background checks
- Taxicab permits
- ABO applicants
- IAFIS system
- Mugshot station for on-line juvenile and sex offender entry
- Maintain sex offender registry
- Custody of property and evidence

SPECIAL INVESTIGATION DIVISION

Duties & Responsibilities

Special Investigation Division detectives' primary function is to document and investigate any complaint involving the illegal use or distribution of controlled dangerous substances. Also, investigate organized crimes, biker gangs, street gangs, vice related crimes and complaints involving alcoholic beverage outlets.

SPECIAL OPERATIONS DIVISION

Duties & Responsibilities

Coordinate Homeland Security Task with all Federal, State and Local agencies and critical infrastructures within St. Charles Parish. Direct operations and activities for the Special Response Team.



Manpower

A Lieutenant and Sergeant make up the Special Operations Division. SRT consists of twenty-one members

DRUG ENFORCEMENT TASK FORCE

Lieutenant George Breedy, DEA

The DEA Task Force was established to disrupt the illicit drug traffic in the New Orleans Field Division's area of responsibility by immobilizing targeted violators and trafficking organizations; gather and report intelligence data relating to trafficking in narcotics and dangerous drugs; and conduct undercover operations where appropriate and engage in other traditional

methods of investigation in order that the task force's activities will result in effective prosecution before the courts of the United States and the State of Louisiana.

DRUG ENFORCEMENT TASK FORCE

Deputy David Hitzman, Criminal Interdiction Officer

The Tri-Parish Criminal Interdiction initiative is comprised of the St. Charles Parish Sheriff's Office, Lafourche Parish Sheriff's Office and Terrebonne Parish Sheriff's Office, along with the Drug Enforcement Administration New Orleans Field Division. The mission of this team is to locate, identify, and intercept individuals, groups and organizations, utilizing roadways and other means of conveyance for criminal activities, such

as, thefts, crimes of violence, furtherance of terrorists acts, trafficking of illegal narcotics or the transportation of bulk currency.

JOINT TERRORISM TASK FORCE

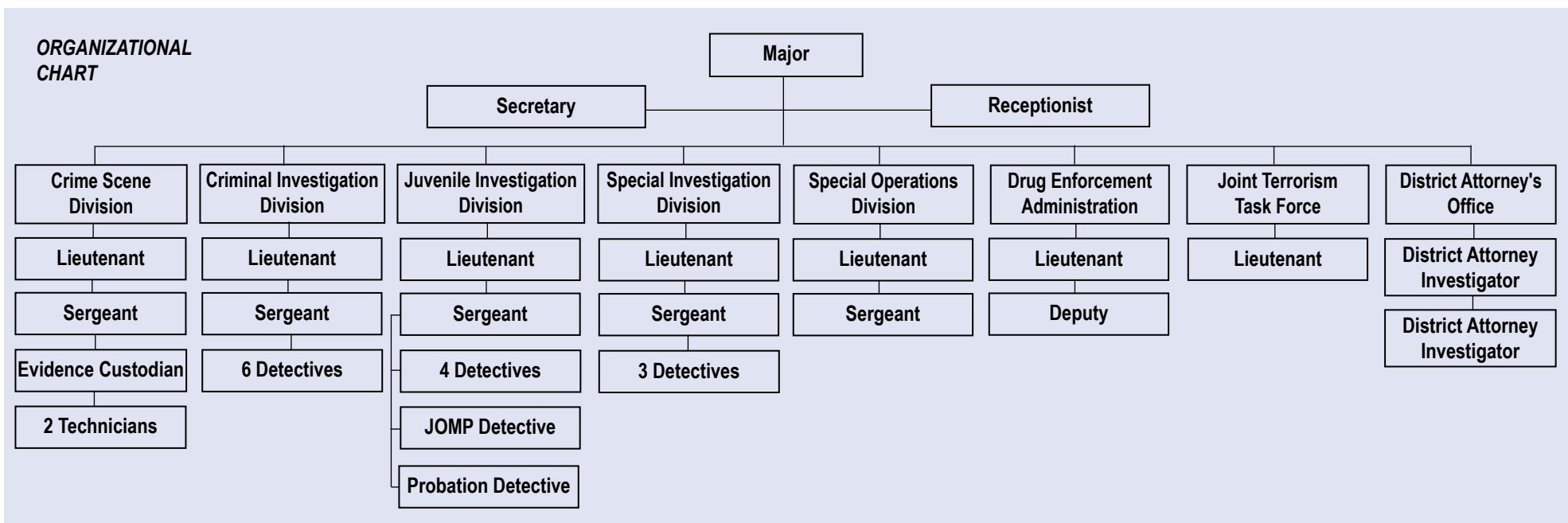
Lieutenant Dave Guzzardi - JTTF

The JTTF Task Force was established to leverage collective resources of the member agencies for the prevention, preemption, deterrence and investigation of terrorist acts that affect United States interests, and to disrupt and prevent terrorist acts and apprehend individuals who may commit or plan to commit such acts. The JTTF shall serve as a means to facilitate information sharing among its members.

DISTRICT ATTORNEY INVESTIGATORS

Jules Tarullo (Retired) Edward Rome

Assigned to the District Attorney's Office to carry out investigations as determined by that office in its operations with the court.



4.

CRIMINAL INVESTIGATION DIVISION

2007 Cases Handles: 818
Property Recovered: \$288,975.00
Arrests: 126

JUVENILE INVESTIGATION DIVISION

2007 Cases Handles: 366
Property Recovered: \$5,229.00
Arrests: 108

CRIME SCENE INVESTIGATION DIVISION

2007 Cases Handles: 1,264

SPECIAL INVESTIGATION DIVISION

2007 Cases Handles: 481
Vehicles Seized: 17
Currency Seized: \$69,465
Arrests: 185

NELSON COLEMAN CORRECTIONAL CENTER



**JOHN
NOWAK**
Major

FACILITY HISTORY

The facility is named in honor of Deputy Nelson Coleman, a 13-year veteran of the St. Charles Parish Sheriff's Office.

Deputy Coleman died in the line of duty while attempting to subdue a suspect wanted on a felony warranty.

MEDICAL SERVICES

- Provide medical, dental, and mental care services
- Perform Medical Screenings and Histories
- Administer Medication
- Coordinate Sick Call
- Respond to Medical/Mental Emergencies
- Coordinate Transportation of Inmates to Outside Facilities as Needed



WORK RELEASE

- Review requests and submit those approved to DOC for approval
- Ensure that submitted inmates meet criteria for program (final six (6) months for Violent offenders and not more than twenty-four 24 months for non-violent offenders).
- Monitor and manage work progress through release data



COMMUNITY SERVICE

- Ensure sentences fall within legal guidelines
- Supervise & log inmate
- Oversee Inmate Activity During Assignment
- Report Inmate Status in Assignment
- Coordinate with Outside Agencies



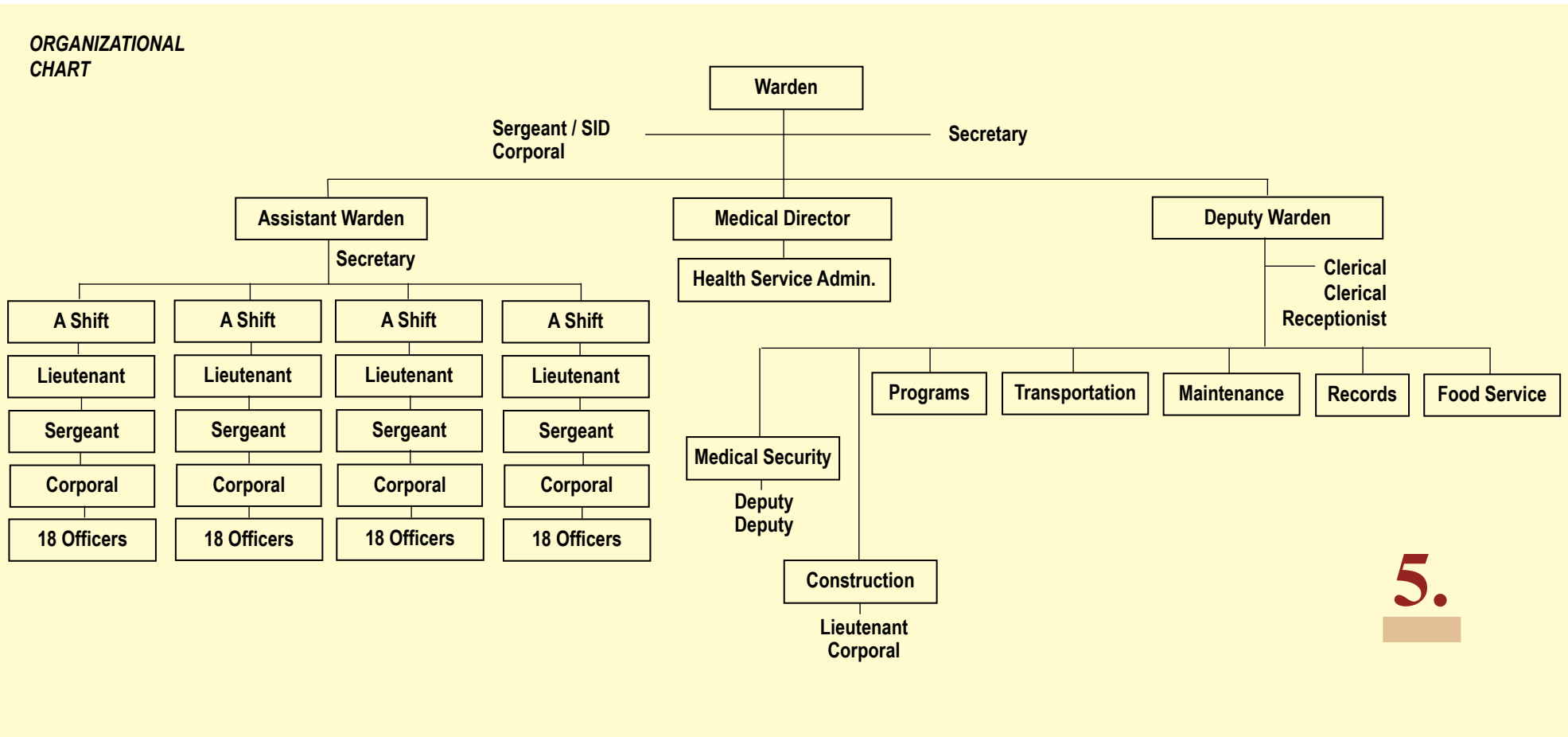
CONSTRUCTION DIVISION

- Built and maintain the Firing Range
- Assemble SRT Equipment Vehicle
- Construct Mobile Command Vehicle
- Maintain the 65 acres surrounding the Correctional center and range
- Handle Sand Bag Operations during emergency weather conditions



PROGRAMS

Counseling Services
Food Preparation
Landscaping
Housekeeping
Automotive Repairs
Anger Management
Project Transition
GED Training
Drug Rehabilitation
Life Skills
Construction & General Maintenance
Religious Programs
Special Investigations / K-9





SPECIAL SERVICES DEPARTMENT



**CAPTAIN
PATRICK
YOE**

MISSION STATEMENT

"To respond to the changing needs of the community through education and prevention strategies and to promote mutual respect between the Sheriff's Office and the people we serve."

ORGANIZATIONAL FUNCTIONS

1. Public Information Officer
2. School Resource Officer
3. D.A.R.E.
4. Victim Programs
 - Domestic Violence
 - Victim Notification
 - Victim Reparation
 - Victim Contact
 - Victim Assistance
5. TRIAD / S.A.L.T.
6. Crime Prevention
 - Neighborhood Watch
 - Women and Student Defense Child Safety
7. Animal Abuse
8. Grants:
 - Drug Free Community
 - United Way - TRIAD,
 - Domestic Violence,
 - Entergy, and DOW
9. Domestic Violence
 - S.A.V.E.
 - (Stop Abusive Violent Episodes)
10. Funeral Escort coordination
11. Annual Projects

ANNUAL PROJECTS

- United Way Coordination
- Special Olympics Torch Run Coordination
- National Night Out
- Sheriff's Summer Camp
- Senior Easter Luncheon
- Update / SCSO Annual Report
- Explorer Program
- Safe School Audits
- Event Coordination
- Website Maintenance
- Special Projects

NEW D.A.R.E.
Louisiana participated in 8th and



6.



9th grade pilot program in 2003.

Expanded program for Middle and Senior High school Components:

- to act in their own best interest when facing high risk, low-gain choices
- to resist peer pressure and other influences in making personal choices
- helping students recognize and cope with feelings of anger without causing harm to themselves or others

Drug Abuse Resistance Education

- Three D.A.R.E. officers cover 12 schools in St. Charles Parish
- Currently teach 46 classes (13 lessons per class) to 5th graders
- 1200 St. Charles students to graduate from the D.A.R.E. program this school year
- Visitations to Kindergarten through 4th grade offering lessons on safety and "making right choices".

PUBLIC INFORMATION OFFICERS

Dwayne LaGrange and Pat Yoes

- Disseminate daily briefs
- Develop materials designed to promote positive image of Sheriff's Office
- On 24 Hour Call



Sgt. Dwayne LaGrange, PIO

VICTIM ASSISTANCE

- Victim Reparations
- Victim Notification
- Animal Cruelty Investigations
- Parish Ordinance Committee
- Instructor: Self Defense and CPR/First Aid
- Detail Coordinator
- Domestic Violence

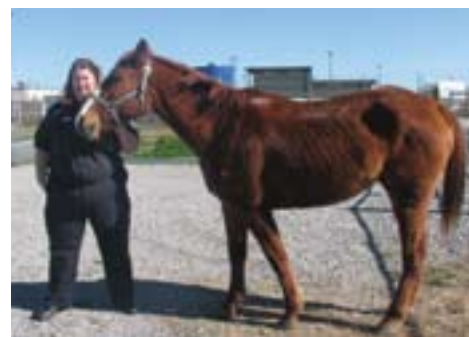
CRIME PREVENTION - TRIAD SENIOR PROGRAMS

- Triad / Seniors and Lawmen Together
- Elderly Abuse
- SAFE - CALL Program
- D.V. follow-up
- Outreach Programs for Seniors
 - House Numbering
 - File of Life
 - Adopt a Senior
- Website Update
- Child Safety Programs

CRIME PREVENTION - YOUTH PROGRAMS

Child Safety Programs

- Child Fingerprinting, Seatbelts, Home-Alone, Bicycle,



Lt. Pam Schmitt (Animal Abuse Case)

Halloween and "Policemen are your Friends" presentations

- Courthouse and 911 Tours
- Public Fairs and Events
- Mail Courier for Patrol
- Special Olympics Coordinator
- Bike Registration
- Domestic Violence Follow-up

SCHOOL RESOURCE OFFICERS

- School Patrol
- Investigate intruder and other complaints
- Document Child Protection incidents and make referrals
- Liaison between schools and Sheriff's Office
- Supervise Violence Prevention and Community Service
- Participate in Safe School Audit



Cpl. Robert Touns and Ben

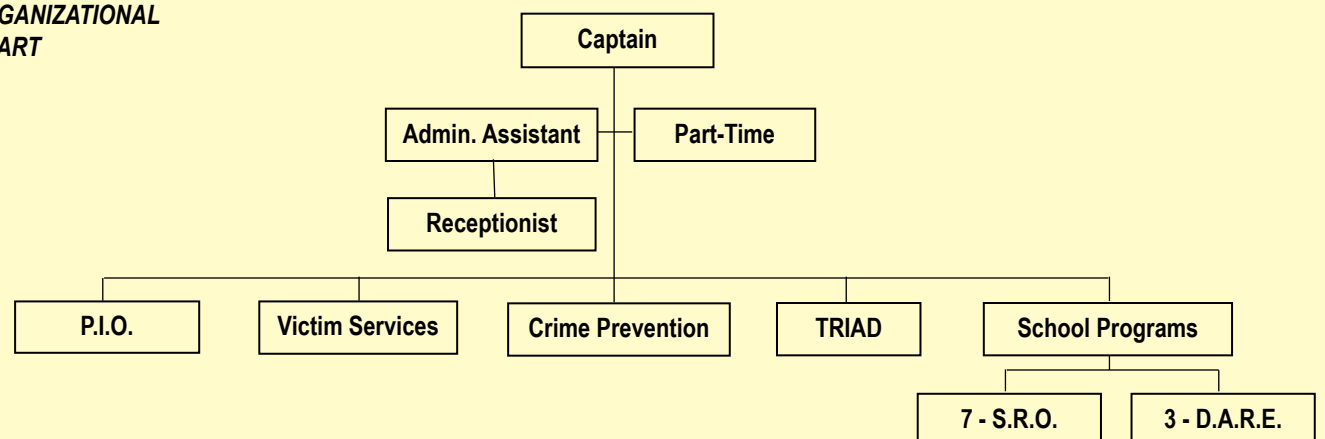
VICTIM SUPPORT

- Victim Assistance
- Victim Reparations
- Victim Notification
- Victim Contact
- Domestic Violence Investigations and Follow-Up
 - S.A.V.E.
 - Basic Training
 - Advanced Roll-Call Training



Susie Gauthier and Lt. Jan Troxler

ORGANIZATIONAL CHART



TRAINING DEPARTMENT



JOHN ROOK
Captain

MISSION STATEMENT:

The Training Division provides and coordinates all training efforts for St. Charles Parish Sheriff's deputies. The mission is to provide the highest quality of professional law enforcement training possible.

DIVISION STRUCTURE & STAFFING

- Four full-time training staff
- 25 - F.B.I./P.O.S.T. Certified Instructors
- 52 - Total Misc. Instructors

TRAINING CONDUCTED

Orientation 2007

- 11 Patrol Deputies, approximately 42 hours each

- 35 Corrections Deputies, approximately 32 hours Non P.O.S.T. or 34 P.O.S.T. hours each
- 18 Communications / Clerical Personnel, approximately 8 hours each

BASIC ACADEMY

P.O.S.T. Basic Academy Training

480 Hours among which are:

- Legal Aspects, 40 hours
- First Aid and CPR, 14 hours
- Traffic Services, 16 hour
- Patrol Activities, 23 hours
- Officer Survival, 38 hours
- Becoming a Professional Peace Officer, 16 hours

TRAINING CONDUCTED

Field Training Officer (Train the Trainer)
– 11 FTOs trained for 2007

ANNUAL IN-SERVICE TRAINING

Annual In-Service Training for each enforcement and corrections personnel
– Approximately 30-40 hours annually

– Reaches approximately 270 deputies (Patrol and Corrections)

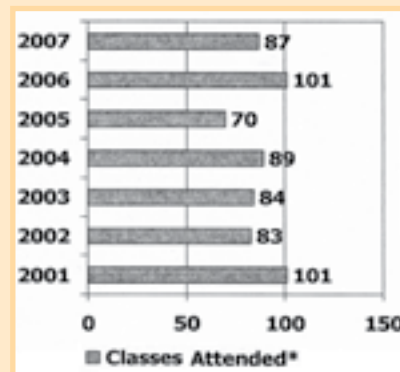
RESERVE ACADEMY & IN-SERVICE TRAINING

- St. Charles Sheriff's Office Reserve Academy runs 8 months
- Curriculum consists of POST

Courses instructed by POST Instructors
– At the end of the Reserve academy each Reserve officer will have received approximately 176 hours of training.
– All current Reserve Officers are encouraged to attend Reserve Academy Classes of their choosing which will be accepted as In-Service Training hours.

TRAINING OUTSIDE OF SCSO

Total Training Man-Hours: 4,480



* Excludes:

Regional Counter Drug Training Academy (Meridian, MS)
Louisiana State Police: Haz-Mat (Holden, LA)
Southern Anti-Terrorist Regional Training Academy (Carville, LA)

ADMINISTRATIVE SERVICES DEPARTMENT

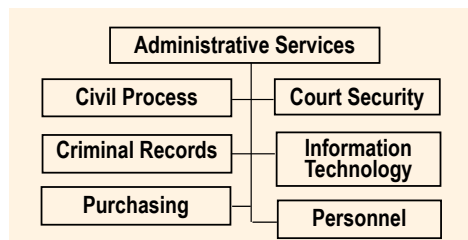


JONATHAN WALSDORF
Captain

FUNCTION/MISSION

To support all SCSO Departments in order to enhance the efficiency of the Agency, the criminal justice system overall, and the community as a whole.

ORGANIZATIONAL STRUCTURE



CIVIL PROCESS DIVISION

Duties & Responsibilities

- Serve Papers
- Maintain a Log of Services
- Deliver Records
- Mail
- Bank
- Assist Tax Division Serve & Document
- Civil and Criminal Subpoenas
- Temporary Restraining Orders
- Civil Seizures from the Sheriff
- Civil Services in Accordance with the Louisiana Civil Code of Procedure
- Any Orders from a Judge
- Services Requested by an Attorney

Number of Assigned Services
2007 Total: 10,732

COURT SECURITY DIVISION

Goals and Objectives

- To maintain the current level of security as desired by the Court.
- To provide the safest environment possible for all officers of the Court considering the existing parameters.
- While maintaining a safe environment, provide an atmosphere where members of the public are able to participate in the criminal justice process.

Responsibilities:

It is the responsibility of the Sheriff to provide a bailiff or "crier" in each Court Division, while in session.

In addition these individuals retrieve documents at the request of the judge in preparation of going into session.

Court Security also monitors Parish owned metal detectors located in public hallway leading to the Judicial area of the courthouse, specifically the 2nd floor.

Duties include maintaining "quiet" so as to not disrupt the courts in session.

Court Security Personnel
(6 Full Time)
Division Commander
2 Security Officers
3 Bailiff's

CRIMINAL RECORDS DIVISION

Objectives/Goals

The preservation and access of files to better serve the Sheriffs' Office, the Court and the citizens of St. Charles.

Responsibilities

Manage / maintain records pertaining

to the arrest of all persons booked into the Correctional center.

Manage / maintain all offense/incident & investigative reports generated by SCSO.

Manage / maintain all Crash reports investigated by SCSO

The filing and management of all Attachment/Arrest Warrant files generated by the 29th Judicial District Judges or Magistrates (Justice of the Peace).

VOLUME OF PRODUCTION

2007 Document Requests

Arrest Reports Processed - 4,622
Offense/Incident Reports Processed and Disseminated - 7,420
Crash Reports Processed - 1,829
Criminal Background Checks Processed - 2,115

Warrants/Attachments

Warrants/Attachments Processed - 7,862
Arrest/Child Support Warrant/

Attachments - 1,022
Traffic Attachments or
Bench Warrants - 6,840

INFORMATION

TECHNOLOGY DIVISION

Goals & Objectives

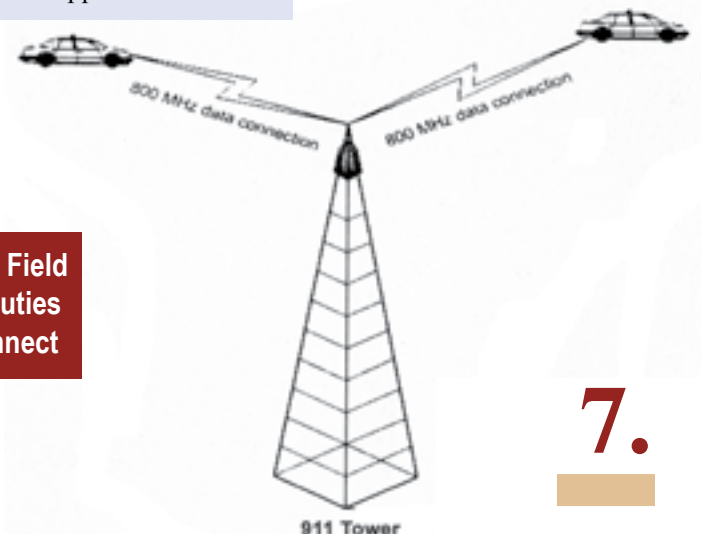
To maintain the Sheriff's Office Critical Infrastructure data networks and various electronic data applications. Includes designing, implementing and evaluating the effectiveness as well as ensuring the security of the data within.

The Network and Equipment

Currently:

- Approximately 375 Personal Computers
- 20 Network Servers
- 9 Microwave Radio Links
- 7 Outdoor WiFi Access Points
- Email Spam Server/Firewall
- Over 1 Terabit of Network Storage Space

How Field Deputies Connect



7.



CIVIL DEPARTMENT



MAISY ROBICHEAUX
Chief Civil Deputy

MISSION STATEMENT

The mission of the Civil Department is to serve the public and the employees of the St. Charles Parish Sheriff's Office with comprehensive, courteous, and prompt service in accordance with all legal requirements while maintaining ethical standards.

FINANCE DIVISION

Four Full-Time Employees

Major Functions

- * Maintain and control general accounting funds of Sheriff's Office
- * Budgeting \$34 million annually
- * Handle annual audit
- * Manage payroll and employee benefits for 400 full and part-time employees (\$24 million annually)
- * Obtain and manage Health, General, Auto, and Professional Liability Policies
- * Public Bid Law procurements
- * Sales of Assets at Public Auction

TAX COLLECTION DIVISION

Five Full-Time Employees

Major Functions

- * Collection and disbursement of over \$100 million in Property Tax payments
- * Advertise and hold annual Property Tax Sale
- * Issue Parish Occupational Licenses (2,400 issued, nearly \$1.3 million collected)
- * Issue Tax Certificates
- * Process Property Redemptions

CIVIL PROCESS DIVISION

Five Full-Time Employees

Major Functions

- * Seizures of foreclosed property
- * Conduct Sheriff's Sales (Scheduled 212 sales)
- * Garnishments
- * Collected/disbursed \$1.1 million

Claudette Magee assisting a customer in Civil Department.



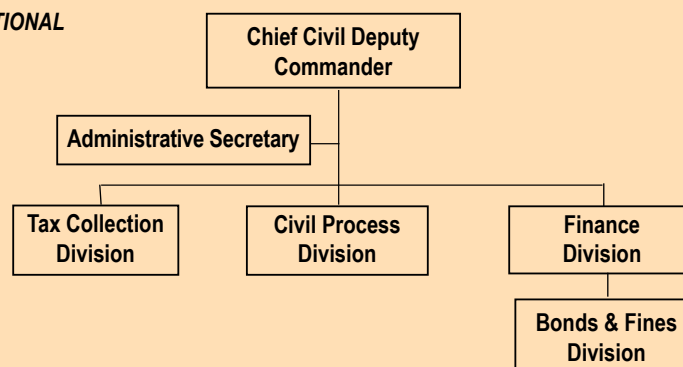
BONDS & FINES DIVISION

Seven Full-Time Employees

Major Functions

- * Collection and disbursement of over \$5 million in Traffic and Criminal Fines (over 22,000 payments)
- * Retrieves bond money from Correctional Center
- * Refunds bond money when case is settled
- * Attends court and documents bond information
- * Enters attachments when offender fails to pay or appear in court
- * Provides affidavit for reinstatement of driver's license

ORGANIZATIONAL CHART



Contact the Civil Department
(985) 783-6237

PLANNING AND RESEARCH DEPARTMENT



JOHN CORNWELL
Major

MISSION STATEMENT FOR PLANNING AND RESEARCH

The Planning and Research department shall consistently and carefully examine the operations and methodology of St. Charles Sheriff's Office to promote the efficient operations of the office.

The functions of the Planning Research Department shall include but not be limited to:

1. Researching, issuing and recommending policy changes
2. Researching legal issues
3. Forms control
4. Review and preparation of contracts for Law Enforcement Services
5. Professional Standards
6. Staff Inspections

TRIAD Senior Day 2008

FREE

All senior citizens are invited to attend
TRIAD SENIOR DAY

FREE

THURSDAY • OCT. 30, 2008 • 9:30 A.M.
JERUSALEM SHRINE CENTER IN DESTREHAN

This event is free and offers a variety of health screenings, information for seniors, entertainment, lunch, door prizes and give-a-ways.

Contact Lori Duplessis at 985-783-1355 for more information.

SEND YOUR GIFT HOME

SCSO employees enthusiastically gave to the United Way of St. Charles in 2007, increasing contributions for the eighth consecutive year.

By designating the parish's United Way agency as the recipient of your pledge, you can ensure that neighbors like you will receive crucial services in

their time of need.

Unless you designate St. Charles Parish, your gift will go to the parish in which your office campaign is held.

Please, send your gift home to the United Way of St. Charles.



8.

Want more information on the services or programs offered by the St. Charles Parish Sheriff's Office? Whether you're seeking a listing of departments, services, or a brief history of the agency, you can find it on the World Wide Web. Visit us today at: www.stcharlessheriff.org.

