



Greg Champagne  
Sheriff

## St. Charles Parish Sheriff's Office Special Services Department

220 Judge Edward Dufresne Parkway, Luling, LA 70070  
Voice (985) 783-1355 • Fax (985) 783-1195

# News Release

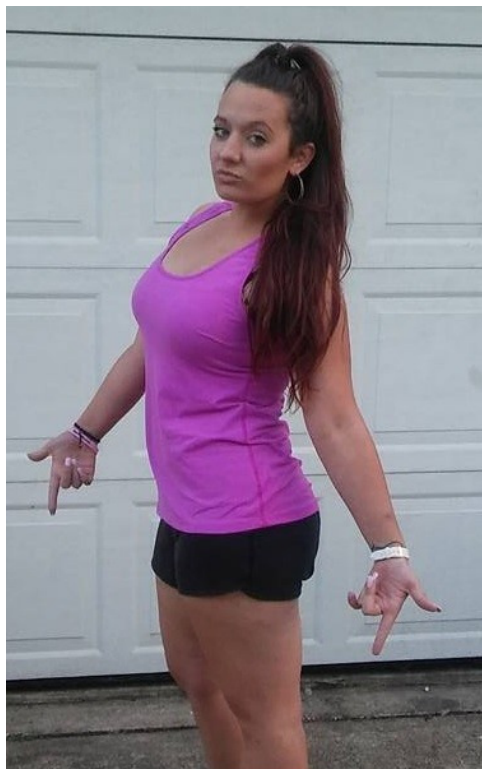
November 7, 2016

## MISSING DESTREHAN WOMAN

The St. Charles Parish Sheriff's Office is asking for your help in locating a missing Destrehan woman. Caitlin Marie Verret of 3742 Ashton Drive in Destrehan, Louisiana was last seen by her family on November 2<sup>nd</sup>. The last non-physical contact was a text message sent to a family member on November 5<sup>th</sup> from her cell phone stating she was on her way home, but never showed up.

Verret is a 22 year-old white female, 5'3 weighing approximately 125 lbs. Verret was last seen driving a 2005 white Mazda 3 - Louisiana License Plate #947ABK.

Anyone with any information on the whereabouts of Caitlin Verret is asked to contact Detective Chris Baird at 985-783-1135 or 985-783-6807.



Caitlin Marie Verret